



LENTOR
CENTRAL
RESIDENCES



Bridging Land, Air and Sky

There's nothing more fulfilling than coming home to an extraordinary haven that seamlessly blends nature and city life. Lentor Central Residences rises gracefully on elevated terrain, integrating with the vibrant community and future Hillock Park. Here, fresh air and lush, breathtaking views meet elevated moments of serenity and sophistication—offering a sanctuary that is uniquely yours.

Artist's Impression

Skyward Living in the Embrace of Hillock Park

FACILITIES





Experience Life Above the Horizon



Tennis Court For Illustration Only



Gym with Yoga Room For Illustration Only

This splendid development blends contemporary living with lush surroundings and wellness amenities. Enjoy captivating views of the multi-tiered landscaping, shimmering pools by the Clubhouse, and the Sport Terrace which seamlessly leads to the Tennis Court.



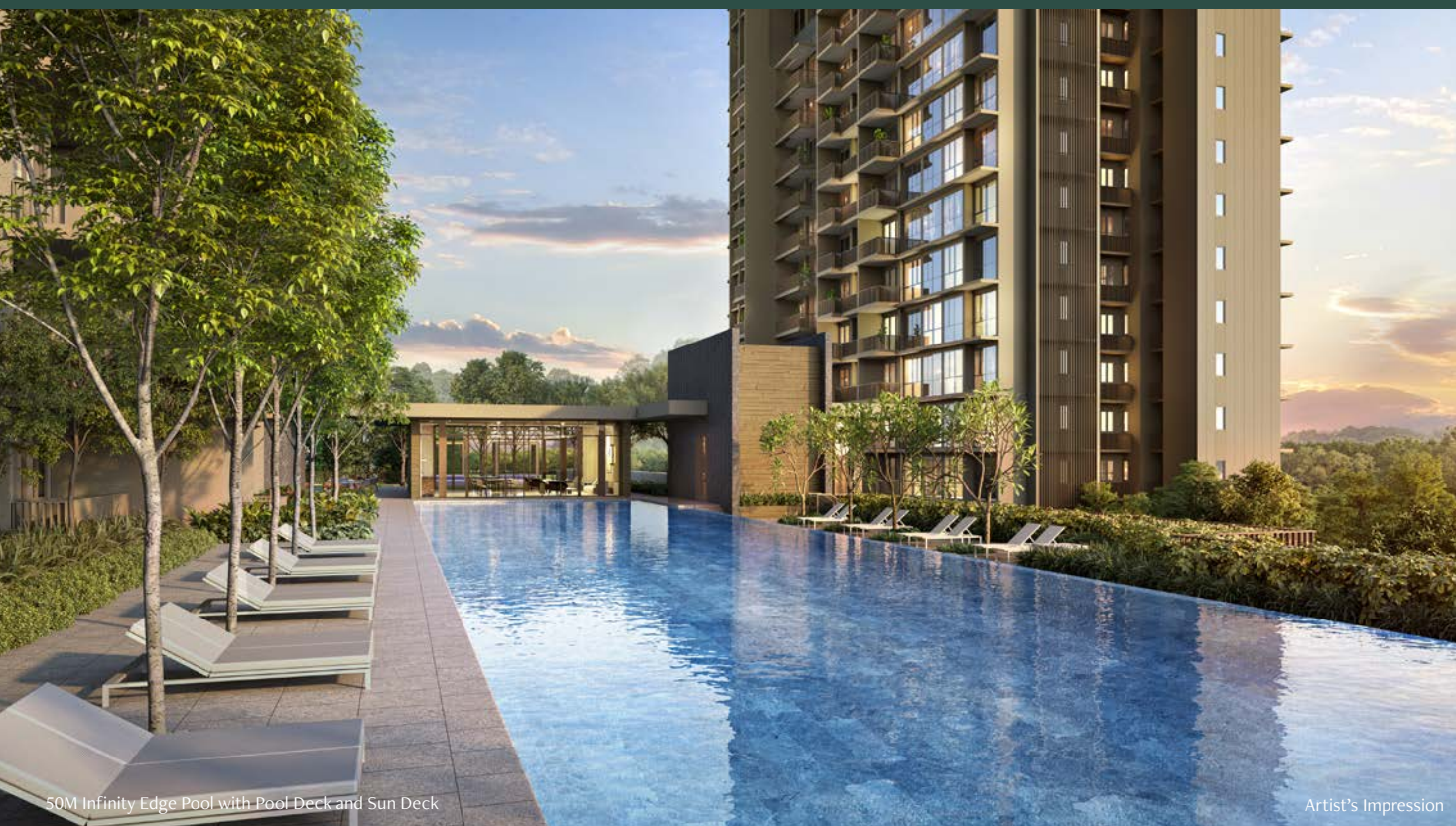
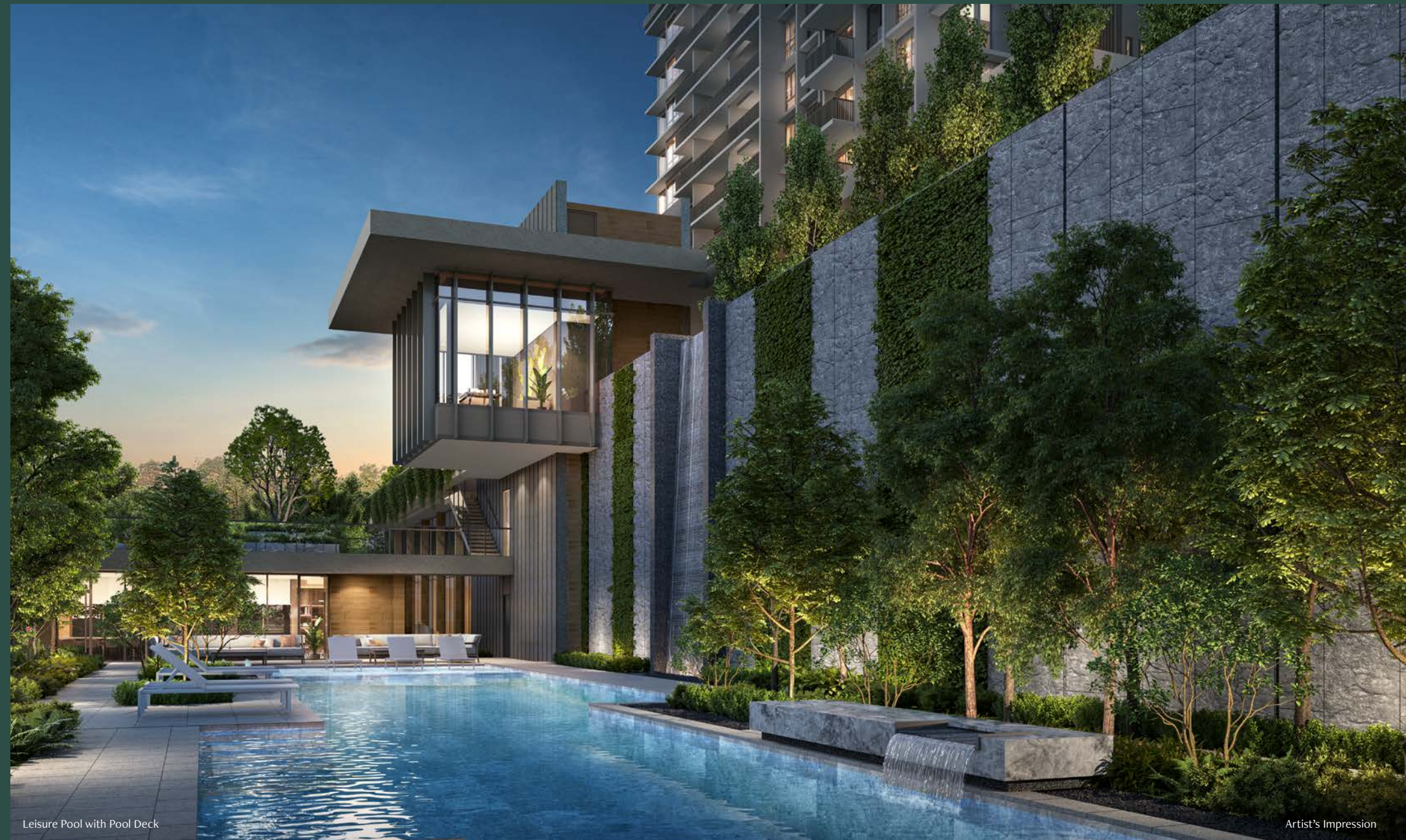
Overall Landscape

Artist's Impression



Discover Refined Living in Nature's Embrace

The tranquil 50-metre Infinity Edge Pool, Leisure Pool, and Massage Pool offer the perfect escape for relaxation. Rejuvenate at the Pool Deck, Sun Deck and Spa Pavilion, unwind in the Clubhouse, or enjoy quality time with loved ones in the Games Room.





Awaken to Boundless Possibilities



The thoughtfully crafted landscapes seamlessly combine beauty and functionality. Relax and unwind in the Lap Pool and Fun Pool, offering both tranquillity and enjoyment. The Central Lawn provides a serene retreat for moments of peace amidst nature. Inside the Clubhouse, the expansive Library offers the ideal space for reading, reflection, and relaxation.





Artist's Impression

Elevated Living,
Uplifted by Nature

Rising above the skyline, Lentor Central Residences invites you to experience a life of distinction. Savour unforgettable moments with loved ones while taking in stunning vistas at the Sunrise Lounge, or indulge in culinary delights at the Sky Pavilion, featuring BBQ facilities for the perfect gathering.



Sunrise Lounge

Artist's Impression



Sky Pavilion with BBQ

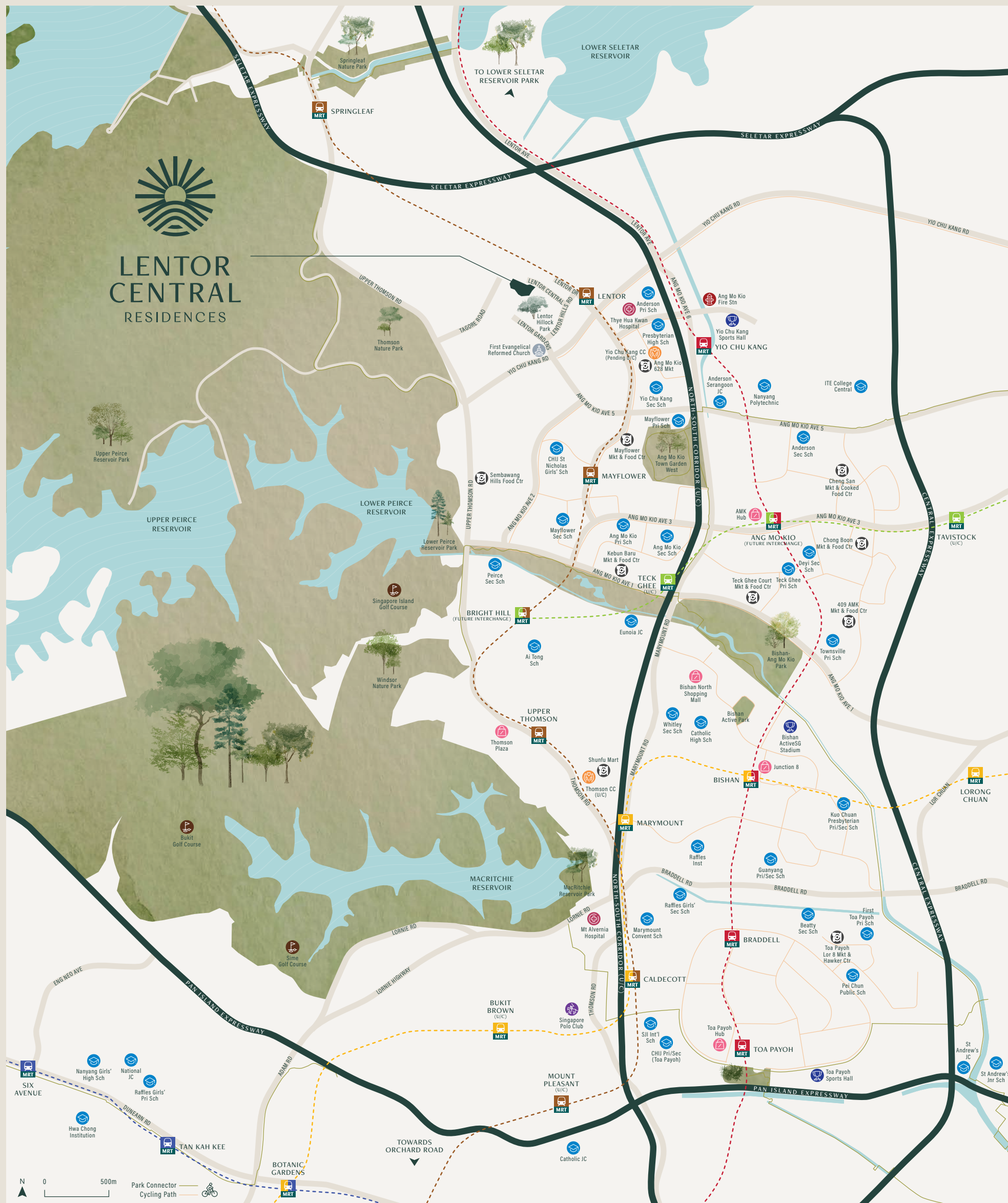
Artist's Impression



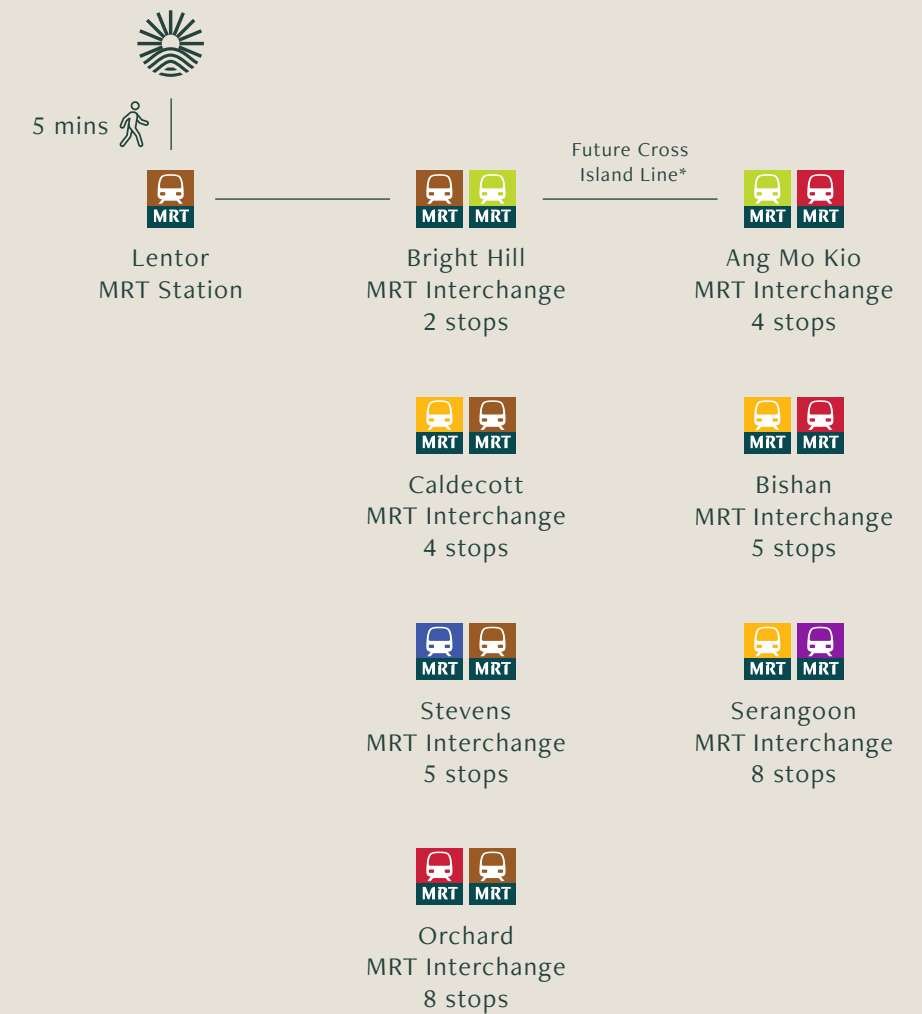
Where Familiarity
Meets Rejuvenation

LOCATION





Seamlessly Connected, Just Moments from Everything



LENTOR CENTRAL RESIDENCES is connected to LENTOR MRT station on the Thomson-East Coast Line via covered walkways. Residents also benefit from easy access to the upcoming North-South Corridor to Woodlands, and highways such as Seletar Expressway (SLE), Tampines Expressway (TPE), and Central Expressway (CTE) to the CBD and beyond.

*The train stops were determined based on the future MRT System map available at <https://www.lta.gov.sg>, which is accurate as of print time.



Proximity to Places of Prominence



For Illustration Only

Nestled in a vibrant, pedestrian-friendly neighbourhood, Lentor Central Residences offers residents unparalleled access to parks, commercial hubs, lifestyle destinations, everyday conveniences, and prestigious schools.



04 / Lower Peirce Reservoir Park

Nestled just minutes from your doorstep, lush natural retreats teeming with local flora and fauna await at the reservoir parks of MacRitchie, Upper Peirce, Lower Peirce, and Upper Seletar, spanning over 3,000 hectares of untouched wilderness.



06 / Bishan-Ang Mo Kio Park

REDISCOVER NATURE

- 01 / Future Hillock Park
- 02 / Ang Mo Kio Town Garden West
- 03 / Thomson Nature Park
- 04 / Lower Peirce Reservoir Park
- 05 / Lower Seletar Reservoir Park
- 06 / Bishan-Ang Mo Kio Park
- 07 / Windsor Nature Park
- 08 / Upper Seletar Reservoir Park
- 09 / Treetop Walk, MacRitchie Nature Trail



09 / Treetop Walk, MacRitchie Nature Trail

Connected to
Life's Modern Pleasures

Perfectly positioned within its vibrant surroundings, Lentor Central Residences invites you to explore the district's best, from quaint shops in Ang Mo Kio to gourmet cafés and haunts in Bishan and Thomson Plaza, and delicious local delights in Toa Payoh.



For Illustration Only



12 / Thomson Plaza



15 / Junction 8



For Illustration Only

NOURISHMENT, LEISURE,
AND ENTERTAINMENT

- 10 / AMK Hub
- 11 / Upper Thomson Road Eateries
- 12 / Thomson Plaza
- 13 / Springleaf Eateries
- 14 / The Seletar Mall
- 15 / Junction 8
- 16 / Seletar Aerospace Park



Nurturing All Stages of Life



18 / Ang Mo Kio Pri Sch



17 / Anderson Pri Sch



19 / Mayflower Pri Sch



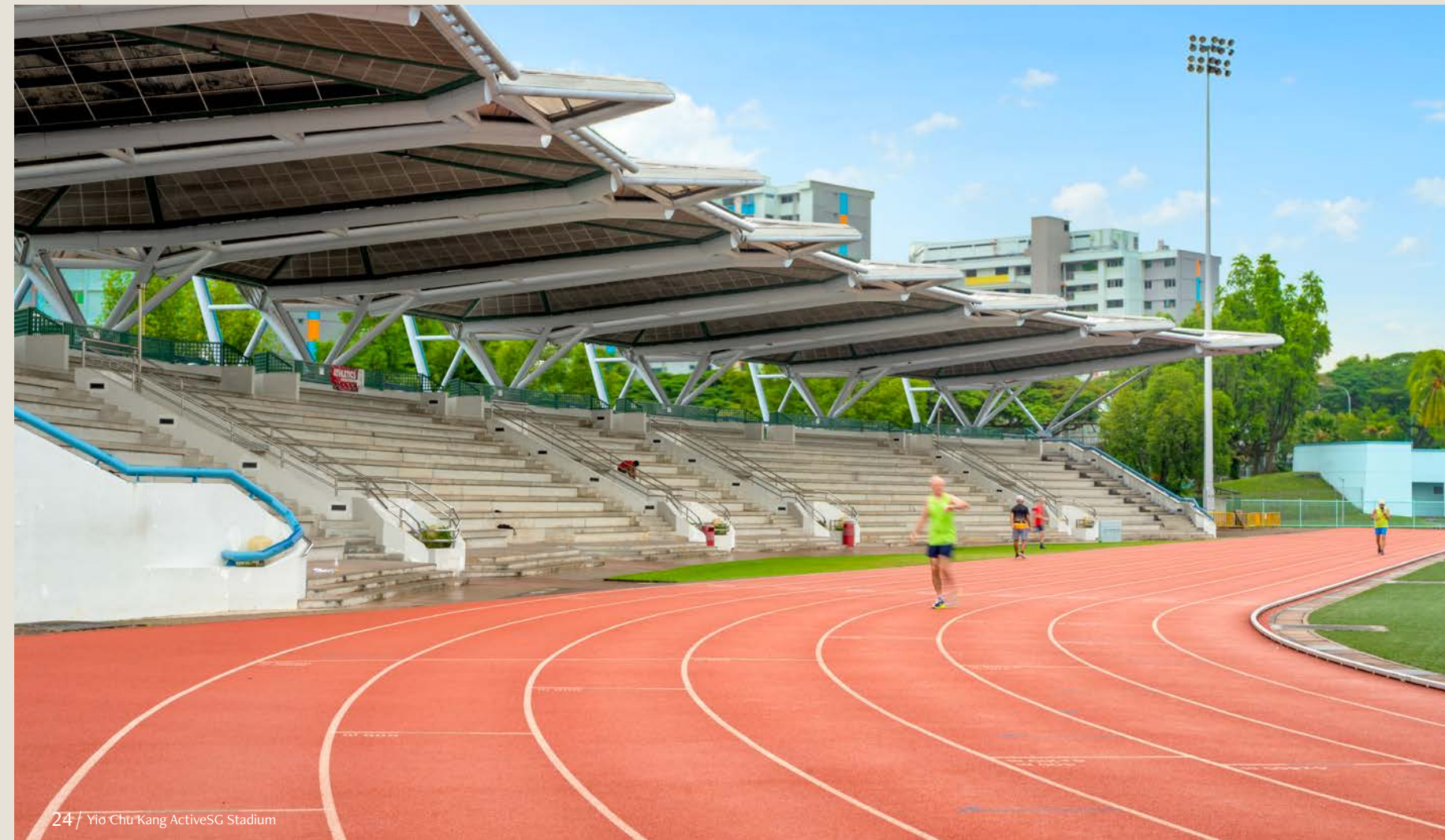
20 / Presbyterian High Sch



21 / CHIJ St Nicholas Girls' Sch

LEARNING INSTITUTIONS WITHIN THE VICINITY

- 17 / Anderson Pri Sch
- 18 / Ang Mo Kio Pri Sch
- 19 / Mayflower Pri Sch
- 20 / Presbyterian High Sch
- 21 / CHIJ St Nicholas Girls' Sch
- 22 / Anderson Serangoon JC
- 23 / Nanyang Polytechnic



24 / Yio Chu Kang ActiveSG Stadium



New and existing park-lands within this vibrant community offer a wealth of recreational and educational opportunities just steps away from residents. The area boasts renowned schools at every level—from early childhood and primary to secondary education—and prestigious institutions for higher learning.

WELLNESS-FOCUSED DESTINATIONS

- 24 / Yio Chu Kang ActiveSG Stadium
- 25 / Singapore Island Country Club (Island Location)
- 26 / Orchid Country Club
- 27 / Seletar Country Club



27 / Seletar Country Club



Escape to a World of Comfort



For Illustration Only



For Illustration Only

Indulge in elegantly designed spaces that blend intimacy with spaciousness. Bask in breathtaking views of open skies and lush greenery, where a serene retreat awaits, far removed from the hustle of the outside world. In an instant, a deep sense of warmth and belonging envelops you.



For Illustration Only



Own Sanctuaries,
Not Just Spaces

Experience the epitome of fine living in a tranquil haven, designed to offer peace away from the urban rhythm. Inside, discover interiors that radiate modern elegance with a gentle and serene charm.



Envision Your Life in
This Remarkable Environment



Artist's Impression



Site Plan

FACILITIES AT 1st STOREY

- 1 Clubhouse, consisting of:
 - Library
 - Gym with Yoga Room
 - Games Room
 - Mid-Level Garden Lounge
- 2 Function Room (2 nos.)
- 3 Changing Rooms (male and female changing room, each with steam room)
- 4 50M Infinity Edge Pool with Pool Deck and Sun Deck (water surface area approx. 500m²)
- 5 Leisure Pool with Pool Deck (water surface area approx. 220m²)
- 6 Reading Lounge (open to sky)
- 7 Central Lawn
- 8 Garden Pavilion (2 nos.)
- 9 Fun Pool with Seating Area (water surface area approx. 100m²)
- 10 Pavilion with BBQ
- 11 25M Lap Pool with Pool Deck (water surface area approx. 150m²)
- 12 Spa Pavilion with Massage Pool (water surface approx. 9m²) (2 nos.)
- 13 Ferns Garden
- 14 Gourmet Pavilion with BBQ
- 15 Alfresco Gourmet Deck
- 16 Children's Playground
- 17 Kids Party Pavilion with BBQ
- 18 Play Lawn
- 19 Yoga Lawn
- 20 Meditation Deck
- 21 Garden Alcove
- 22 Tennis Court (1 no. hard court)
- 23 Sport Terrace
- 24 Garden Terrace

ANCILLARY FACILITIES AT BASEMENT & 1st STOREY

- 25 Arrival Court with Arrival Lounge (Basement)
- 26 Early Childhood Development Centre (Basement), consisting of:
 - Early Childhood Development Centre
 - Playground (open to sky)
 - Drop-off
 - Carparks & Accessible Carpark Lots (open to sky)
- 27 Bicycle Park (Basement)
- 28 Guard House (Basement)
- 29 Pedestrian Side Gate (Basement & 1st Storey) (4 nos.)
- 30 Generator (Basement)
- 31 Bin Centre (Basement)
- 32 Substation (Basement)



A Tapestry of Endearing Landscapes

Lentor Central Residences is thoughtfully positioned away from the main road, nestled behind beautifully layered landscaping that enhances its sense of privacy. Upon entering, the expansive hallway with its soaring ceilings and exquisite design accents immediately creates a welcoming, refined atmosphere for residents, guests, and visitors alike.

Site Plan

FACILITIES AT SKY TERRACE, AT 14th STOREY

BLOCK 20

- 40 Reading Alcoves
- 41 Cozy Alcoves
- 42 Hillock Park Lounge
- 43 Exercise Terrace
- 44 Sunrise Lounge
- 45 Gourmet Deck
- 46 Accessible Toilet

BLOCK 18

- 33 Reading Niches
- 34 Cozy Niches
- 35 Park View Lounge
- 36 Exercise Deck
- 37 Lentor Central Lounge
- 38 Dining Lounge
- 39 Accessible Toilet

FACILITIES AT LOWER ROOF, AT 29th STOREY

BLOCK 18

- 47 Rooftop Pavilion with BBQ
- 48 Sky Pavilion with BBQ
- 49 Accessible Toilet





For Illustration Only

Built-In System

Gain control of these home safety, comfort and functionality features via a mobile app#



SMART GATEWAY

Standalone hub to access and control Z-Wave compatible smart devices in your home via a mobile app#



DIGITAL LOCKSET

Unlock your main door using PIN / Key or via a mobile app#



SMART AIR CON CONTROL

Control, check and set the temperature in the Living/Dining and Master Bedroom via a mobile app#



SMART AIR CONDITIONING

Additional remote access to other bedrooms



HOME SECURITY CAMERA

Efficient monitoring of home environment



SMART POWER PLUG

Touch-free control of wall sockets for safer usage and energy savings



SMART LIGHTING CONTROL

Set the mood or switch off lights when not in use



SMART HOME APPLIANCES

Fuss-free control of digital-enabled devices and machines



SMART CURTAINS & BLINDS CONTROL

Wake up or roll down smart-wired window shades

Schematic Diagram

18 Lentor Central (PC 788839)									20 Lentor Central (PC 788838)								
Roof Top Garden																	
28	#28-01 (2)c	#28-02 (3)c	#28-03 (4)c	#28-04 (2)e	#28-05 (2)g	#28-06 (1)b	#28-07 (3)a	#28-08 (4)b	#28-09 (2)f								
27	#27-01 (2)c	#27-02 (3)c	#27-03 (4)c	#27-04 (2)e	#27-05 (2)g	#27-06 (1)b	#27-07 (3)a	#27-08 (4)b	#27-09 (2)f								
26	#26-01 (2)c	#26-02 (3)c	#26-03 (4)c	#26-04 (2)e	#26-05 (2)g	#26-06 (1)b	#26-07 (3)a	#26-08 (4)b	#26-09 (2)f								
25	#25-01 (2)c	#25-02 (3)c	#25-03 (4)c	#25-04 (2)e	#25-05 (2)g	#25-06 (1)b	#25-07 (3)a	#25-08 (4)b	#25-09 (2)f								
24	#24-01 (2)c	#24-02 (3)c	#24-03 (4)c	#24-04 (2)e	#24-05 (2)g	#24-06 (1)b	#24-07 (3)a	#24-08 (4)b	#24-09 (2)f								
23	#23-01 (2)c	#23-02 (3)c	#23-03 (4)c	#23-04 (2)e	#23-05 (2)g	#23-06 (1)b	#23-07 (3)a	#23-08 (4)b	#23-09 (2)f								
22	#22-01 (2)c	#22-02 (3)c	#22-03 (4)c	#22-04 (2)e	#22-05 (2)g	#22-06 (1)b	#22-07 (3)a	#22-08 (4)b	#22-09 (2)f								
21	#21-01 (2)c	#21-02 (3)c	#21-03 (4)c	#21-04 (2)e	#21-05 (2)g	#21-06 (1)b	#21-07 (3)a	#21-08 (4)b	#21-09 (2)f								
20	#20-01 (2)c	#20-02 (3)c	#20-03 (4)c	#20-04 (2)e	#20-05 (2)g	#20-06 (1)b	#20-07 (3)a	#20-08 (4)b	#20-09 (2)f								
19	#19-01 (2)c	#19-02 (3)c	#19-03 (4)c	#19-04 (2)e	#19-05 (2)g	#19-06 (1)b	#19-07 (3)a	#19-08 (4)b	#19-09 (2)f								
18	#18-01 (2)c	#18-02 (3)c	#18-03 (4)c	#18-04 (2)e	#18-05 (2)g	#18-06 (1)b	#18-07 (3)a	#18-08 (4)b	#18-09 (2)f								
17	#17-01 (2)c	#17-02 (3)c	#17-03 (4)c	#17-04 (2)e	#17-05 (2)g	#17-06 (1)b	#17-07 (3)a	#17-08 (4)b	#17-09 (2)f								
16	#16-01 (2)c	#16-02 (3)c	#16-03 (4)c	#16-04 (2)e	#16-05 (2)g	#16-06 (1)b	#16-07 (3)a	#16-08 (4)b	#16-09 (2)f								
15	#15-01 (2)c	#15-02 (3)c	#15-03 (4)c	#15-04 (2)e	#15-05 (2)g	#15-06 (1)b	#15-07 (3)a	#15-08 (4)b	#15-09 (2)f								
14	Sky Garden																
13	#13-01 (2)c	#13-02 (3)c	#13-03 (4)c	#13-04 (2)e	#13-05 (2)g	#13-06 (1)b	#13-07 (3)a	#13-08 (4)b	#13-09 (2)f								
12	#12-01 (2)c	#12-02 (3)c	#12-03 (4)c	#12-04 (2)e	#12-05 (2)g	#12-06 (1)b	#12-07 (3)a	#12-08 (4)b	#12-09 (2)f								
11	#11-01 (2)c	#11-02 (3)c	#11-03 (4)c	#11-04 (2)e	#11-05 (2)g	#11-06 (1)b	#11-07 (3)a	#11-08 (4)b	#11-09 (2)f								
10	#10-01 (2)c	#10-02 (3)c	#10-03 (4)c	#10-04 (2)e	#10-05 (2)g	#10-06 (1)b	#10-07 (3)a	#10-08 (4)b	#10-09 (2)f								
9	#09-01 (2)c	#09-02 (3)c	#09-03 (4)c	#09-04 (2)e	#09-05 (2)g	#09-06 (1)b	#09-07 (3)a	#09-08 (4)b	#09-09 (2)f								
8	#08-01 (2)c	#08-02 (3)c	#08-03 (4)c	#08-04 (2)e	#08-05 (2)g	#08-06 (1)b	#08-07 (3)a	#08-08 (4)b	#08-09 (2)f								
7	#07-01 (2)c	#07-02 (3)c	#07-03 (4)c	#07-04 (2)e	#07-05 (2)g	#07-06 (1)b	#07-07 (3)a	#07-08 (4)b	#07-09 (2)f								
6	#06-01 (2)c	#06-02 (3)c	#06-03 (4)c	#06-04 (2)e	#06-05 (2)g	#06-06 (1)b	#06-07 (3)a	#06-08 (4)b	#06-09 (2)f								
5	#05-01 (2)c	#05-02 (3)c	#05-03 (4)c	#05-04 (2)e	#05-05 (2)g	#05-06 (1)b	#05-07 (3)a	#05-08 (4)b	#05-09 (2)f								
4	#04-01 (2)c	#04-02 (3)c	#04-03 (4)c	#04-04 (2)e	#04-05 (2)g	#04-06 (1)b	#04-07 (3)a	#04-08 (4)b	#04-09 (2)f								
3	#03-01 (2)c	#03-02 (3)c	#03-03 (4)c	#03-04 (2)e	#03-05 (2)g	#03-06 (1)b	#03-07 (3)a	#03-08 (4)b	#03-09 (2)f								
2	#02-01 (2)c	#02-02 (3)c	#02-03 (4)c	#02-04 (2)e	#02-05 (2)g	#02-06 (1)b	#02-07 (3)a	#02-08 (4)b	#02-09 (2)f								
1	#01-01 (2)c1	#01-02 (3)c1	#01-03 (4)c1	#01-04 (2)e1	#01-05 (1)c1	#01-06 (1)b1	#01-07 (3)a1	#01-08 (4)b1	#01-09 (2)f1								
B1	Lobby Carpark																

27	#27-10 (2)a	#27-11 (1)a	#27-12 (3)a	#27-13 (4)a	#27-14 (2)d	#27-15 (2)e	#27-16 (4)c	#27-17 (3)b	#27-18 (2)b								
26	#26-10 (2)a	#26-11 (1)a	#26-12 (3)a	#26-13 (4)a	#26-14 (2)d	#26-15 (2)e	#26-16 (4)c	#26-17 (3)b	#26-18 (2)b								
25	#25-10 (2)a	#25-11 (1)a	#25-12 (3)a	#25-13 (4)a	#25-14 (2)d	#25-15 (2)e	#25-16 (4)c	#25-17 (3)b	#25-18 (2)b								
24	#24-10 (2)a	#24-11 (1)a	#24-12 (3)a	#24-13 (4)a	#24-14 (2)d	#24-15 (2)e	#24-16 (4)c	#24-17 (3)b	#24-18 (2)b								
23	#23-10 (2)a	#23-11 (1)a	#23-12 (3)a	#23-13 (4)a	#23-14 (2)d	#23-15 (2)e	#23-16 (4)c	#23-17 (3)b	#23-18 (2)b								
22	#22-10 (2)a	#22-11 (1)a	#22-12 (3)a	#22-13 (4)a	#22-14 (2)d	#22-15 (2)e	#22-16 (4)c	#22-17 (3)b	#22-18 (2)b								
21	#21-10 (2)a	#21-11 (1)a	#21-12 (3)a	#21-13 (4)a	#21-14 (2)d	#21-15 (2)e	#21-16 (4)c	#21-17 (3)b	#21-18 (2)b								
20	#20-10 (2)a	#20-11 (1)a	#20-12 (3)a	#20-13 (4)a	#20-14 (2)d	#20-15 (2)e	#20-16 (4)c	#20-17 (3)b	#20-18 (2)b								
19	#19-10 (2)a	#19-11 (1)a	#19-12 (3)a	#19-13 (4)a	#19-14 (2)d	#19-15 (2)e	#19-16 (4)c	#19-17 (3)b	#19-18 (2)b								
18	#18-10 (2)a	#18-11 (1)a	#18-12 (3)a	#18-13 (4)a	#18-14 (2)d	#18-15 (2)e	#18-16 (4)c	#18-17 (3)b	#18-18 (2)b								
17	#17-10 (2)a	#17-11 (1)a	#17-12 (3)a	#17-13 (4)a	#17-14 (2)d	#17-15 (2)e	#17-16 (4)c	#17-17 (3)b	#17-18 (2)b								
16	#16-10 (2)a	#16-11 (1)a	#16-12 (3)a	#16-13 (4)a	#16-14 (2)d	#16-15 (2)e	#16-16 (4)c	#16-17 (3)b	#16-18 (2)b								
15	#15-10 (2)a	#15-11 (1)a	#15-12 (3)a	#15-13 (4)a	#15-14 (2)d	#15-15 (2)e	#15-16 (4)c	#15-17 (3)b	#15-18 (2)b								
14	Sky Garden																
13	#13-10 (2)a	#13-11 (1)a	#13-12 (3)a	#13-13 (4)a	#13-14 (2)d	#13-15 (2)e	#13-16 (4)c	#13-17 (3)b	#13-18 (2)b								
12	#12-10 (2)a	#12-11 (1)a	#12-12 (3)a	#12-13 (4)a	#12-14 (2)d	#12-15 (2)e	#12-16 (4)c	#12-17 (3)b	#12-18 (2)b								
11	#11-10 (2)a	#11-11 (1)a	#11-12 (3)a	#11-13 (4)a	#11-14 (2)d	#11-15 (2)e	#11-16 (4)c	#11-17 (3)b	#11-18 (2)b								
10	#10-10 (2)a	#10-11 (1)a	#10-12 (3)a	#10-13 (4)a	#10-14 (2)d	#10-15 (2)e	#10-16 (4)c	#10-17 (3)b	#10-18 (2)b								
9	#09-10 (2)a	#09-11 (1)a	#09-12 (3)a	#09-13 (4)a	#09-14 (2)d	#09-15 (2)e	#09-16 (4)c	#09-17 (3)b	#09-18 (2)b								
8	#08-10 (2)a	#08-11 (1)a	#08-12 (3)a	#08-13 (4)a	#08-14 (2)d	#08-15 (2)e	#08-16 (4)c	#08-17 (3)b	#08-18 (2)b								
7	#07-10 (2)a	#07-11 (1)a	#07-12 (3)a	#07-13 (4)a	#07-14 (2)d	#07-15 (2)e	#07-16 (4)c	#07-17 (3)b	#07-18 (2)b								
6	#06-10 (2)a	#06-11 (1)a	#06-12 (3)a	#06-13 (4)a	#06-14 (2)d	#06-15 (2)e	#06-16 (4)c	#06-17 (3)b	#06-18 (2)b								
5	#05-10 (2)a	#05-11 (1)a	#05-12 (3)a	#05-13 (4)a	#05-14 (2)d	#05-15 (2)e	#05-16 (4)c	#05-17 (3)b	#05-18 (2)b								
4	#04-10 (2)a	#04-11 (1)a	#04-12 (3)a	#04-13 (4)a	#04-14 (2)d	#04-15 (2)e	#04-16 (4)c	#04-17 (3)b	#04-18 (2)b								
3	#03-10 (2)a	#03-11 (1)a	#03-12 (3)a	#03-13 (4)a	#03-14 (2)d	#03-15 (2)e	#03-16 (4)c	#03-17 (3)b	#03-18 (2)b								
2	#02-10 (2)a	#02-11 (1)a	#02-12 (3)a	#02-13 (4)a	#02-14 (2)d	#02-15 (2)e	#02-16 (4)c	#02-17 (3)b	#02-18 (2)b								
1	#01-10 (2)a1	#01-11 (1)a1	#01-12 (3)a1	#01-13 (4)a1	#01-14 (1)c1	#01-15 (2)e1	#01-16 (4)c1	#01-17 (3)b1	#01-18 (2)b1								
B1b	Lobby Carpark																
B1a	Lobby Carpark																
B1	Lobby Carpark															ECDC	

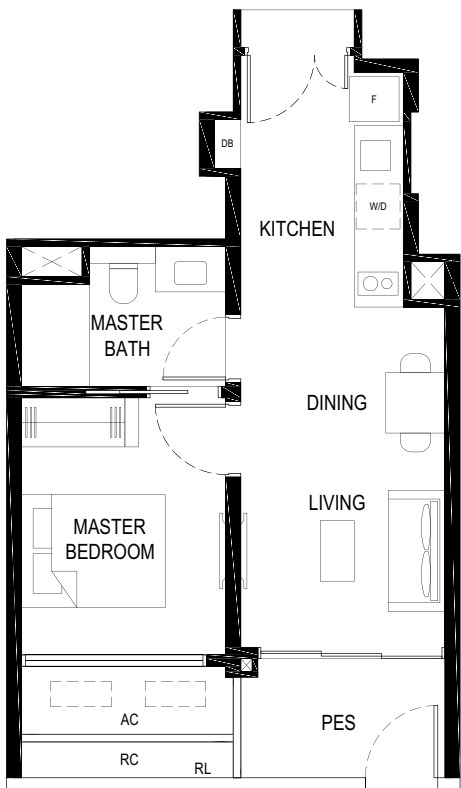
LEGEND

1 Bedroom	3 Bedroom
2 Bedroom	4 Bedroom

Compatible smartphone/tablet, internet connection and Wi-Fi system required, to be provided separately by user.

1 BEDROOM

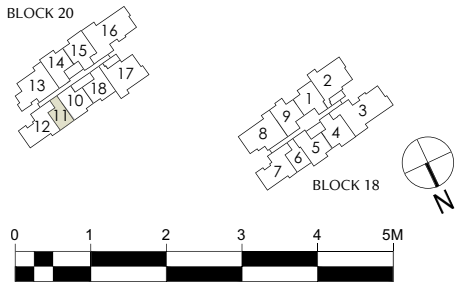
TYPE (1)a1
43 sq m
#01-11



- LEGEND:
- F - FRIDGE
 - DB - DISTRIBUTION BOARD
 - W/D - WASHER CUM DRYER
 - AC - AIRCON LEDGE (NON-STRATA AREA)
 - RC - REINFORCED CONCRETE LEDGE (NON-STRATA AREA)
 - RL - RAILING (NON STRATA AREA)
 - PES - PRIVATE ENCLOSED SPACE

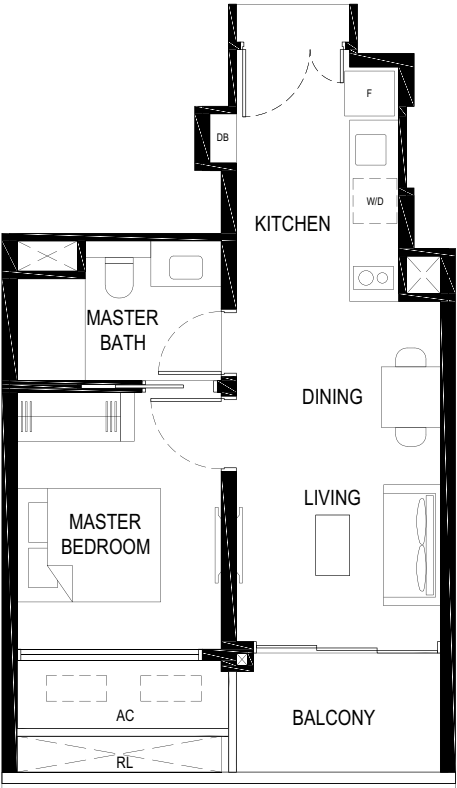
- AIRCON CONDENSER
- SERVICES VOID SPACE (NON-STRATA AREA)
- RAINWATER DOWNPIPE SHAFT SPACE (NON-STRATA AREA)
- WALL NOT ALLOWED TO BE HACKED OR ALTERED (INCLUDING BY WAY OF DRILLING)
- NON - STRUCTURAL WALL

THE BALCONY SHALL NOT BE ENCLOSED. ONLY APPROVED BALCONY SCREENS ARE TO BE USED.
FOR AN ILLUSTRATION OF THE APPROVED BALCONY SCREEN, PLEASE REFER TO PAGE 69 OF THIS BROCHURE.



1 BEDROOM

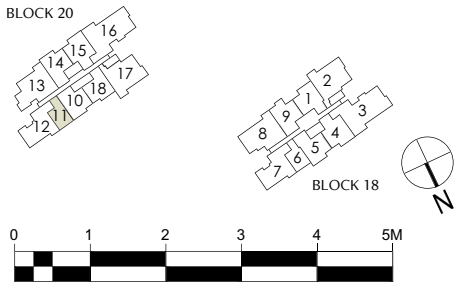
TYPE (1)a
43 sq m
#02-11 to #13-11
#15-11 to #27-11



- LEGEND:
- F - FRIDGE
 - DB - DISTRIBUTION BOARD
 - W/D - WASHER CUM DRYER
 - AC - AIRCON LEDGE (NON-STRATA AREA)
 - RL - RAILING (NON STRATA AREA)

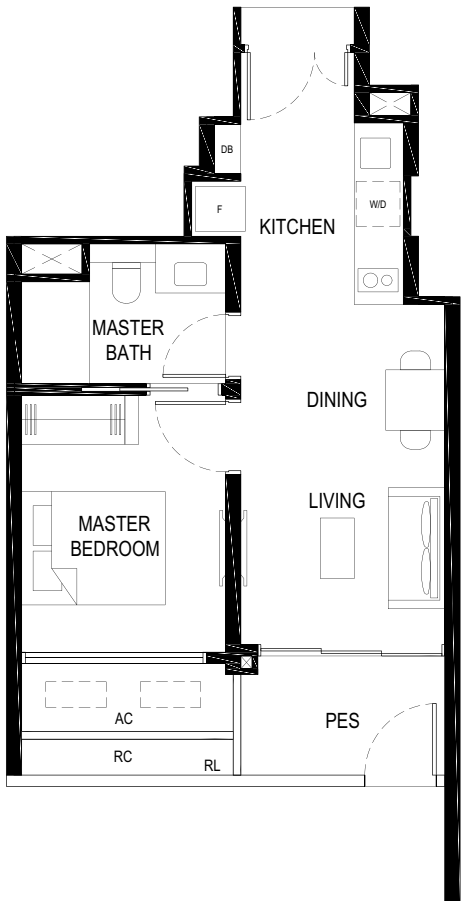
- AIRCON CONDENSER
- SERVICES VOID SPACE (NON-STRATA AREA)
- RAINWATER DOWNPIPE SHAFT SPACE (NON-STRATA AREA)
- WALL NOT ALLOWED TO BE HACKED OR ALTERED (INCLUDING BY WAY OF DRILLING)
- NON - STRUCTURAL WALL

THE BALCONY SHALL NOT BE ENCLOSED. ONLY APPROVED BALCONY SCREENS ARE TO BE USED.
FOR AN ILLUSTRATION OF THE APPROVED BALCONY SCREEN, PLEASE REFER TO PAGE 69 OF THIS BROCHURE.



1 BEDROOM

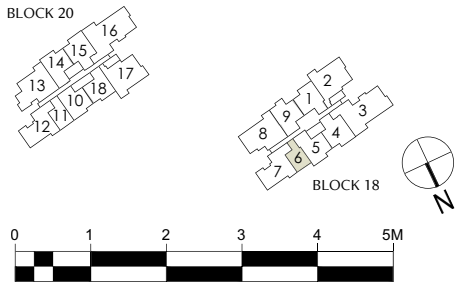
TYPE (1)b1
43 sq m
#01-06



- LEGEND:
- F - FRIDGE
 - DB - DISTRIBUTION BOARD
 - W/D - WASHER CUM DRYER
 - AC - AIRCON LEDGE (NON-STRATA AREA)
 - RC - REINFORCED CONCRETE LEDGE (NON-STRATA AREA)
 - RL - RAILING (NON STRATA AREA)
 - PES - PRIVATE ENCLOSED SPACE

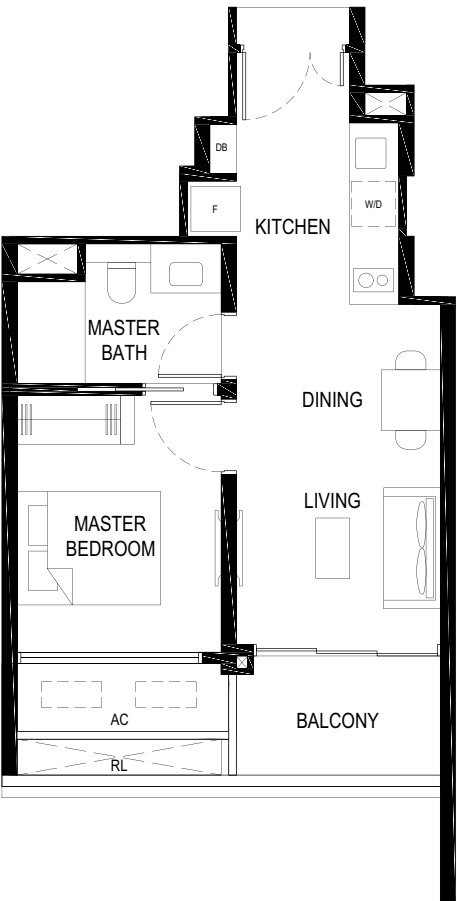
- AIRCON CONDENSER
- SERVICES VOID SPACE (NON-STRATA AREA)
- RAINWATER DOWNPIPE SHAFT SPACE (NON-STRATA AREA)
- WALL NOT ALLOWED TO BE HACKED OR ALTERED (INCLUDING BY WAY OF DRILLING)
- NON - STRUCTURAL WALL

THE BALCONY SHALL NOT BE ENCLOSED. ONLY APPROVED BALCONY SCREENS ARE TO BE USED.
FOR AN ILLUSTRATION OF THE APPROVED BALCONY SCREEN, PLEASE REFER TO PAGE 69 OF THIS BROCHURE.



1 BEDROOM

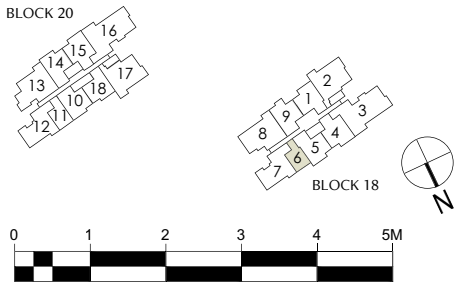
TYPE (1)b
43 sq m
#02-06 to #13-06
#15-06 to #28-06



- LEGEND:
- F - FRIDGE
 - DB - DISTRIBUTION BOARD
 - W/D - WASHER CUM DRYER
 - AC - AIRCON LEDGE (NON-STRATA AREA)
 - RL - RAILING (NON STRATA AREA)

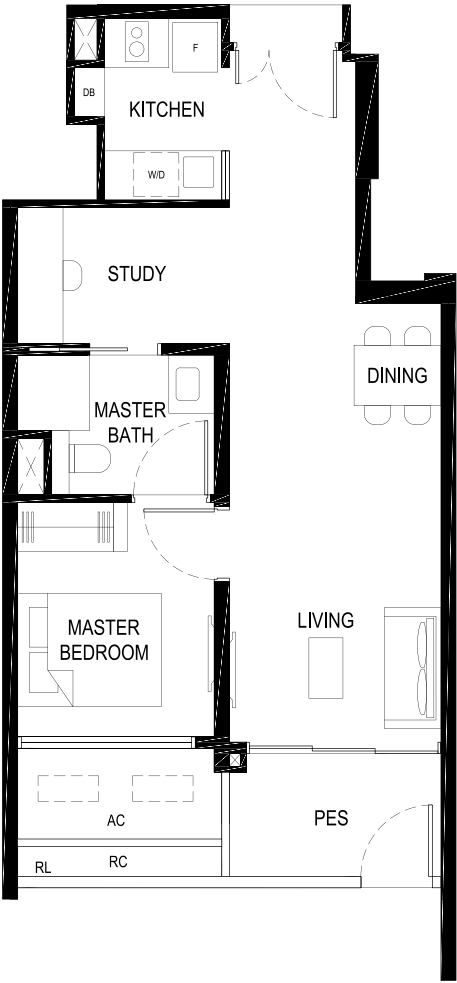
- AIRCON CONDENSER
- SERVICES VOID SPACE (NON-STRATA AREA)
- RAINWATER DOWNPIPE SHAFT SPACE (NON-STRATA AREA)
- WALL NOT ALLOWED TO BE HACKED OR ALTERED (INCLUDING BY WAY OF DRILLING)
- NON - STRUCTURAL WALL

THE BALCONY SHALL NOT BE ENCLOSED. ONLY APPROVED BALCONY SCREENS ARE TO BE USED.
FOR AN ILLUSTRATION OF THE APPROVED BALCONY SCREEN, PLEASE REFER TO PAGE 69 OF THIS BROCHURE.



1 BEDROOM

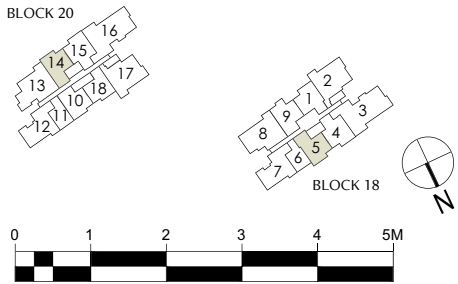
TYPE (1)c1
54 sq m
#01-05
#01-14*
*MIRROR UNIT



- LEGEND:
- F - FRIDGE
 - DB - DISTRIBUTION BOARD
 - W/D - WASHER CUM DRYER
 - AC - AIRCON LEDGE (NON-STRATA AREA)
 - RC - REINFORCED CONCRETE LEDGE (NON-STRATA AREA)
 - RL - RAILING (NON STRATA AREA)
 - PES - PRIVATE ENCLOSED SPACE

- AIRCON CONDENSER
- SERVICES VOID SPACE (NON-STRATA AREA)
- RAINWATER DOWNPIPE SHAFT SPACE (NON-STRATA AREA)
- WALL NOT ALLOWED TO BE HACKED OR ALTERED (INCLUDING BY WAY OF DRILLING)
- NON - STRUCTURAL WALL

THE BALCONY SHALL NOT BE ENCLOSED. ONLY APPROVED BALCONY SCREENS ARE TO BE USED.
FOR AN ILLUSTRATION OF THE APPROVED BALCONY SCREEN, PLEASE REFER TO PAGE 69 OF THIS BROCHURE.



2 BEDROOM

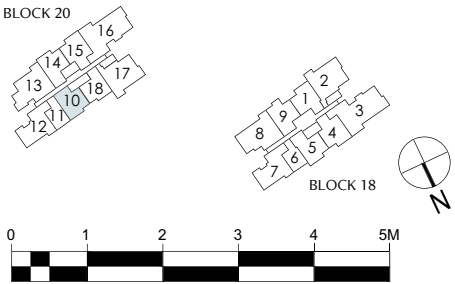
TYPE (2)a1
63 sq m
#01-10



- LEGEND:
- F - FRIDGE
 - DB - DISTRIBUTION BOARD
 - W/D - WASHER CUM DRYER
 - AC - AIRCON LEDGE (NON-STRATA AREA)
 - RC - REINFORCED CONCRETE LEDGE (NON-STRATA AREA)
 - RL - RAILING (NON STRATA AREA)
 - PES - PRIVATE ENCLOSED SPACE

- AIRCON CONDENSER
- SERVICES VOID SPACE (NON-STRATA AREA)
- RAINWATER DOWNPIPE SHAFT SPACE (NON-STRATA AREA)
- WALL NOT ALLOWED TO BE HACKED OR ALTERED (INCLUDING BY WAY OF DRILLING)
- NON - STRUCTURAL WALL

THE BALCONY SHALL NOT BE ENCLOSED. ONLY APPROVED BALCONY SCREENS ARE TO BE USED.
FOR AN ILLUSTRATION OF THE APPROVED BALCONY SCREEN, PLEASE REFER TO PAGE 69 OF THIS BROCHURE.



2 BEDROOM

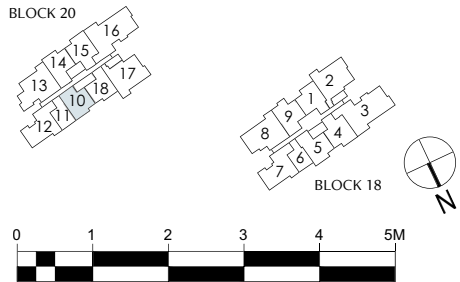
TYPE (2)a
63 sq m
#02-10 to #13-10
#15-10 to #27-10



- LEGEND:
- F - FRIDGE
 - DB - DISTRIBUTION BOARD
 - W/D - WASHER CUM DRYER
 - AC - AIRCON LEDGE (NON-STRATA AREA)
 - RC - REINFORCED CONCRETE LEDGE (NON-STRATA AREA)
 - RL - RAILING (NON STRATA AREA)

- AIRCON CONDENSER
- SERVICES VOID SPACE (NON-STRATA AREA)
- RAINWATER DOWNPIPE SHAFT SPACE (NON-STRATA AREA)
- WALL NOT ALLOWED TO BE HACKED OR ALTERED (INCLUDING BY WAY OF DRILLING)
- NON - STRUCTURAL WALL

THE BALCONY SHALL NOT BE ENCLOSED. ONLY APPROVED BALCONY SCREENS ARE TO BE USED.
FOR AN ILLUSTRATION OF THE APPROVED BALCONY SCREEN, PLEASE REFER TO PAGE 69 OF THIS BROCHURE.



2 BEDROOM

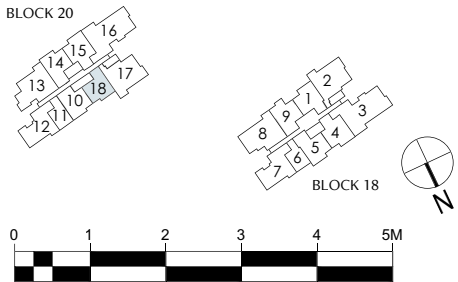
TYPE (2)b1
64 sq m
#01-18



- LEGEND:
- F - FRIDGE
 - DB - DISTRIBUTION BOARD
 - W/D - WASHER CUM DRYER
 - AC - AIRCON LEDGE (NON-STRATA AREA)
 - PES - PRIVATE ENCLOSED SPACE

- AIRCON CONDENSER
- SERVICES VOID SPACE (NON-STRATA AREA)
- RAINWATER DOWNPIPE SHAFT SPACE (NON-STRATA AREA)
- WALL NOT ALLOWED TO BE HACKED OR ALTERED (INCLUDING BY WAY OF DRILLING)
- NON - STRUCTURAL WALL

THE BALCONY SHALL NOT BE ENCLOSED. ONLY APPROVED BALCONY SCREENS ARE TO BE USED.
FOR AN ILLUSTRATION OF THE APPROVED BALCONY SCREEN, PLEASE REFER TO PAGE 69 OF THIS BROCHURE.



2 BEDROOM

TYPE (2)b

64 sq m

#02-18 to #13-18

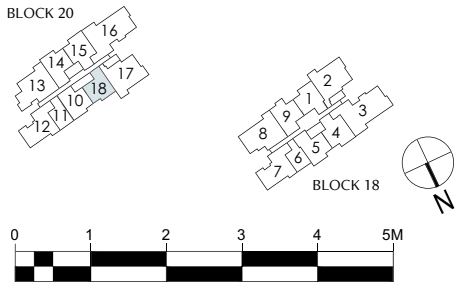
#15-18 to #27-18



- LEGEND:
- F - FRIDGE
 - DB - DISTRIBUTION BOARD
 - W/D - WASHER CUM DRYER
 - AC - AIRCON LEDGE (NON-STRATA AREA)
 - RC - REINFORCED CONCRETE LEDGE (NON-STRATA AREA)

- AIRCON CONDENSER
- SERVICES VOID SPACE (NON-STRATA AREA)
- RAINWATER DOWNPIPE SHAFT SPACE (NON-STRATA AREA)
- WALL NOT ALLOWED TO BE HACKED OR ALTERED (INCLUDING BY WAY OF DRILLING)
- NON - STRUCTURAL WALL

THE BALCONY SHALL NOT BE ENCLOSED. ONLY APPROVED BALCONY SCREENS ARE TO BE USED.
FOR AN ILLUSTRATION OF THE APPROVED BALCONY SCREEN, PLEASE REFER TO PAGE 69 OF THIS BROCHURE.



2 BEDROOM

TYPE (2)c1

63 sq m

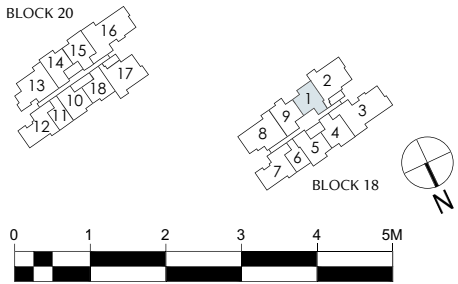
#01-01



- LEGEND:
- F - FRIDGE
 - DB - DISTRIBUTION BOARD
 - W/D - WASHER CUM DRYER
 - AC - AIRCON LEDGE (NON-STRATA AREA)
 - RC - REINFORCED CONCRETE LEDGE (NON-STRATA AREA)
 - RL - RAILING (NON STRATA AREA)
 - PES - PRIVATE ENCLOSED SPACE

- AIRCON CONDENSER
- SERVICES VOID SPACE (NON-STRATA AREA)
- RAINWATER DOWNPIPE SHAFT SPACE (NON-STRATA AREA)
- WALL NOT ALLOWED TO BE HACKED OR ALTERED (INCLUDING BY WAY OF DRILLING)
- NON - STRUCTURAL WALL

THE BALCONY SHALL NOT BE ENCLOSED. ONLY APPROVED BALCONY SCREENS ARE TO BE USED.
FOR AN ILLUSTRATION OF THE APPROVED BALCONY SCREEN, PLEASE REFER TO PAGE 69 OF THIS BROCHURE.



2 BEDROOM

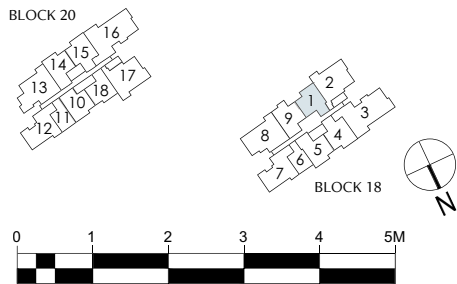
TYPE (2)c
63 sq m
#02-01 to #13-01
#15-01 to #28-01



- LEGEND:
- F - FRIDGE
 - DB - DISTRIBUTION BOARD
 - W/D - WASHER CUM DRYER
 - AC - AIRCON LEDGE (NON-STRATA AREA)
 - RC - REINFORCED CONCRETE LEDGE (NON-STRATA AREA)
 - RL - RAILING (NON STRATA AREA)

- AIRCON CONDENSER
- SERVICES VOID SPACE (NON-STRATA AREA)
- RAINWATER DOWNPIPE SHAFT SPACE (NON-STRATA AREA)
- WALL NOT ALLOWED TO BE HACKED OR ALTERED (INCLUDING BY WAY OF DRILLING)
- NON - STRUCTURAL WALL

THE BALCONY SHALL NOT BE ENCLOSED. ONLY APPROVED BALCONY SCREENS ARE TO BE USED.
FOR AN ILLUSTRATION OF THE APPROVED BALCONY SCREEN, PLEASE REFER TO PAGE 69 OF THIS BROCHURE.



2 BEDROOM

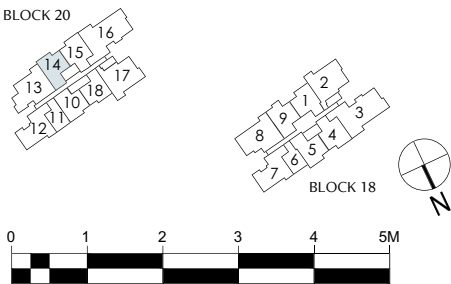
TYPE (2)d
73 sq m
#02-14 to #13-14
#15-14 to #27-14



- LEGEND:
- F - FRIDGE
 - DB - DISTRIBUTION BOARD
 - W/D - WASHER CUM DRYER
 - AC - AIRCON LEDGE (NON-STRATA AREA)
 - RC - REINFORCED CONCRETE LEDGE (NON-STRATA AREA)
 - RL - RAILING (NON STRATA AREA)

- AIRCON CONDENSER
- SERVICES VOID SPACE (NON-STRATA AREA)
- RAINWATER DOWNPIPE SHAFT SPACE (NON-STRATA AREA)
- WALL NOT ALLOWED TO BE HACKED OR ALTERED (INCLUDING BY WAY OF DRILLING)
- NON - STRUCTURAL WALL

THE BALCONY SHALL NOT BE ENCLOSED. ONLY APPROVED BALCONY SCREENS ARE TO BE USED.
FOR AN ILLUSTRATION OF THE APPROVED BALCONY SCREEN, PLEASE REFER TO PAGE 69 OF THIS BROCHURE.



2 BEDROOM

TYPE (2)e1
73 sq m

#01-04
#01-15*

*MIRROR UNIT

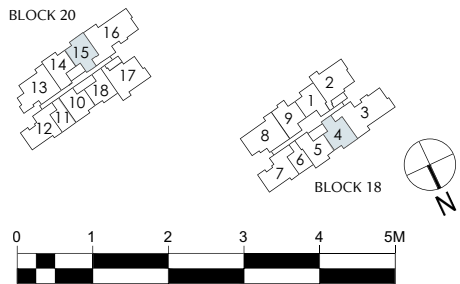


LEGEND:

- F - FRIDGE
- DB - DISTRIBUTION BOARD
- W/D - WASHER CUM DRYER
- AC - AIRCON LEDGE (NON-STRATA AREA)
- RC - REINFORCED CONCRETE LEDGE (NON-STRATA AREA)
- RL - RAILING (NON STRATA AREA)
- PES - PRIVATE ENCLOSED SPACE

- AIRCON CONDENSER
- SERVICES VOID SPACE (NON-STRATA AREA)
- RAINWATER DOWNPIPE SHAFT SPACE (NON-STRATA AREA)
- WALL NOT ALLOWED TO BE HACKED OR ALTERED (INCLUDING BY WAY OF DRILLING)
- NON - STRUCTURAL WALL

THE BALCONY SHALL NOT BE ENCLOSED. ONLY APPROVED BALCONY SCREENS ARE TO BE USED.
FOR AN ILLUSTRATION OF THE APPROVED BALCONY SCREEN, PLEASE REFER TO PAGE 69 OF THIS BROCHURE.



2 BEDROOM

TYPE (2)e
73 sq m

#02-04 to #13-04
#15-04 to #28-04
#02-15* to #13-15*
#15-15* to #27-15*

*MIRROR UNIT

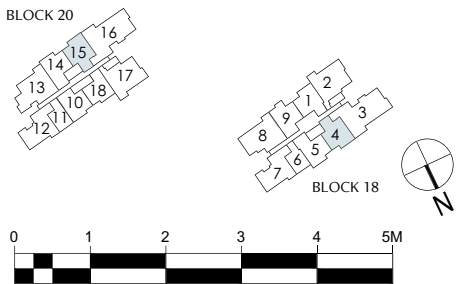


LEGEND:

- F - FRIDGE
- DB - DISTRIBUTION BOARD
- W/D - WASHER CUM DRYER
- AC - AIRCON LEDGE (NON-STRATA AREA)
- RC - REINFORCED CONCRETE LEDGE (NON-STRATA AREA)
- RL - RAILING (NON STRATA AREA)

- AIRCON CONDENSER
- SERVICES VOID SPACE (NON-STRATA AREA)
- RAINWATER DOWNPIPE SHAFT SPACE (NON-STRATA AREA)
- WALL NOT ALLOWED TO BE HACKED OR ALTERED (INCLUDING BY WAY OF DRILLING)
- NON - STRUCTURAL WALL

THE BALCONY SHALL NOT BE ENCLOSED. ONLY APPROVED BALCONY SCREENS ARE TO BE USED.
FOR AN ILLUSTRATION OF THE APPROVED BALCONY SCREEN, PLEASE REFER TO PAGE 69 OF THIS BROCHURE.



2 BEDROOM

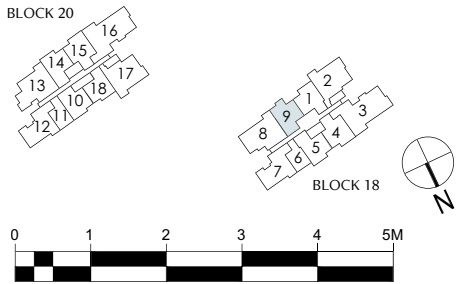
TYPE (2)f1
74 sq m
#01-09



- LEGEND:
- F - FRIDGE
 - DB - DISTRIBUTION BOARD
 - W/D - WASHER CUM DRYER
 - AC - AIRCON LEDGE (NON-STRATA AREA)
 - PES - PRIVATE ENCLOSED SPACE

- AIRCON CONDENSER
- SERVICES VOID SPACE (NON-STRATA AREA)
- RAINWATER DOWNPIPE SHAFT SPACE (NON-STRATA AREA)
- WALL NOT ALLOWED TO BE HACKED OR ALTERED (INCLUDING BY WAY OF DRILLING)
- NON - STRUCTURAL WALL

THE BALCONY SHALL NOT BE ENCLOSED. ONLY APPROVED BALCONY SCREENS ARE TO BE USED.
FOR AN ILLUSTRATION OF THE APPROVED BALCONY SCREEN, PLEASE REFER TO PAGE 69 OF THIS BROCHURE.



2 BEDROOM

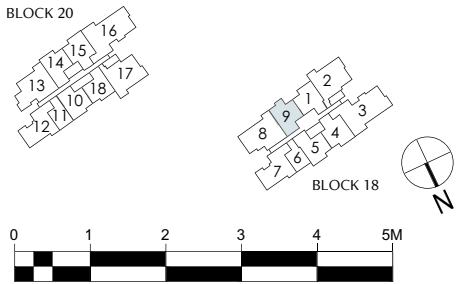
TYPE (2)f
74 sq m
#02-09 to #13-09
#15-09 to #28-09



- LEGEND:
- F - FRIDGE
 - DB - DISTRIBUTION BOARD
 - W/D - WASHER CUM DRYER
 - AC - AIRCON LEDGE (NON-STRATA AREA)
 - RC - REINFORCED CONCRETE LEDGE (NON-STRATA AREA)

- AIRCON CONDENSER
- SERVICES VOID SPACE (NON-STRATA AREA)
- RAINWATER DOWNPIPE SHAFT SPACE (NON-STRATA AREA)
- WALL NOT ALLOWED TO BE HACKED OR ALTERED (INCLUDING BY WAY OF DRILLING)
- NON - STRUCTURAL WALL

THE BALCONY SHALL NOT BE ENCLOSED. ONLY APPROVED BALCONY SCREENS ARE TO BE USED.
FOR AN ILLUSTRATION OF THE APPROVED BALCONY SCREEN, PLEASE REFER TO PAGE 69 OF THIS BROCHURE.



2 BEDROOM

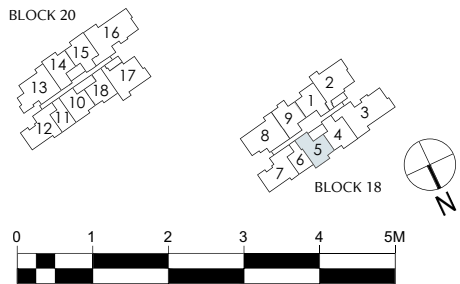
TYPE (2)g
73 sq m
#02-05 to #13-05
#15-05 to #28-05



- LEGEND:
- F - FRIDGE
 - DB - DISTRIBUTION BOARD
 - W/D - WASHER CUM DRYER
 - AC - AIRCON LEDGE (NON-STRATA AREA)
 - RC - REINFORCED CONCRETE LEDGE (NON-STRATA AREA)
 - RL - RAILING (NON STRATA AREA)

- AIRCON CONDENSER
- SERVICES VOID SPACE (NON-STRATA AREA)
- RAINWATER DOWNPIPE SHAFT SPACE (NON-STRATA AREA)
- WALL NOT ALLOWED TO BE HACKED OR ALTERED (INCLUDING BY WAY OF DRILLING)
- NON - STRUCTURAL WALL

THE BALCONY SHALL NOT BE ENCLOSED. ONLY APPROVED BALCONY SCREENS ARE TO BE USED.
FOR AN ILLUSTRATION OF THE APPROVED BALCONY SCREEN, PLEASE REFER TO PAGE 69 OF THIS BROCHURE.



3 BEDROOM

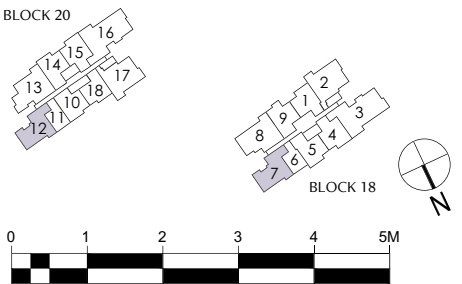
TYPE (3)a1
85 sq m
#01-07
#01-12



- LEGEND:
- F - FRIDGE
 - DB - DISTRIBUTION BOARD
 - W/D - WASHER CUM DRYER
 - AC - AIRCON LEDGE (NON-STRATA AREA)
 - PES - PRIVATE ENCLOSED SPACE
 - ST - STORAGE

- AIRCON CONDENSER
- SERVICES VOID SPACE (NON-STRATA AREA)
- RAINWATER DOWNPIPE SHAFT SPACE (NON-STRATA AREA)
- WALL NOT ALLOWED TO BE HACKED OR ALTERED (INCLUDING BY WAY OF DRILLING)
- NON - STRUCTURAL WALL

THE BALCONY SHALL NOT BE ENCLOSED. ONLY APPROVED BALCONY SCREENS ARE TO BE USED.
FOR AN ILLUSTRATION OF THE APPROVED BALCONY SCREEN, PLEASE REFER TO PAGE 69 OF THIS BROCHURE.



3 BEDROOM

TYPE (3)a

85 sq m

#02-07 to #13-07

#15-07 to #28-07

#02-12 to #13-12

#15-12 to #27-12

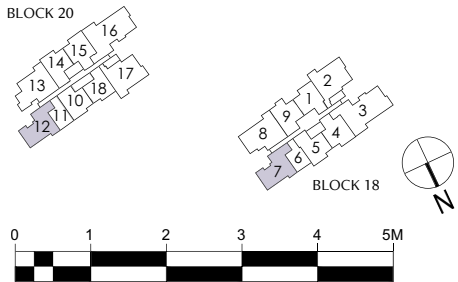


LEGEND:

- F - FRIDGE
- DB - DISTRIBUTION BOARD
- W/D - WASHER CUM DRYER
- AC - AIRCON LEDGE (NON-STRATA AREA)
- RC - REINFORCED CONCRETE LEDGE (NON-STRATA AREA)
- ST - STORAGE

- AIRCON CONDENSER
- SERVICES VOID SPACE (NON-STRATA AREA)
- RAINWATER DOWNPIPE SHAFT SPACE (NON-STRATA AREA)
- WALL NOT ALLOWED TO BE HACKED OR ALTERED (INCLUDING BY WAY OF DRILLING)
- NON - STRUCTURAL WALL

THE BALCONY SHALL NOT BE ENCLOSED. ONLY APPROVED BALCONY SCREENS ARE TO BE USED.
FOR AN ILLUSTRATION OF THE APPROVED BALCONY SCREEN, PLEASE REFER TO PAGE 69 OF THIS BROCHURE.



3 BEDROOM

TYPE (3)b1

100 sq m

#01-17

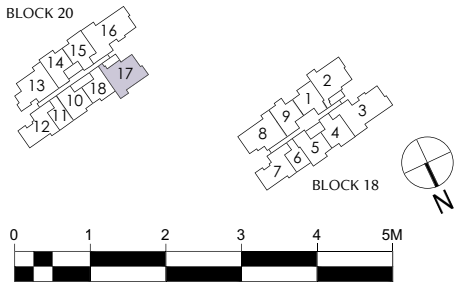


LEGEND:

- F - FRIDGE
- DB - DISTRIBUTION BOARD
- W - WASHER
- D - DRYER
- HS - HOUSEHOLD SHELTER
- AC - AIRCON LEDGE (NON-STRATA AREA)
- PES - PRIVATE ENCLOSED SPACE
- ST - STORAGE
- WC - WATER CLOSET

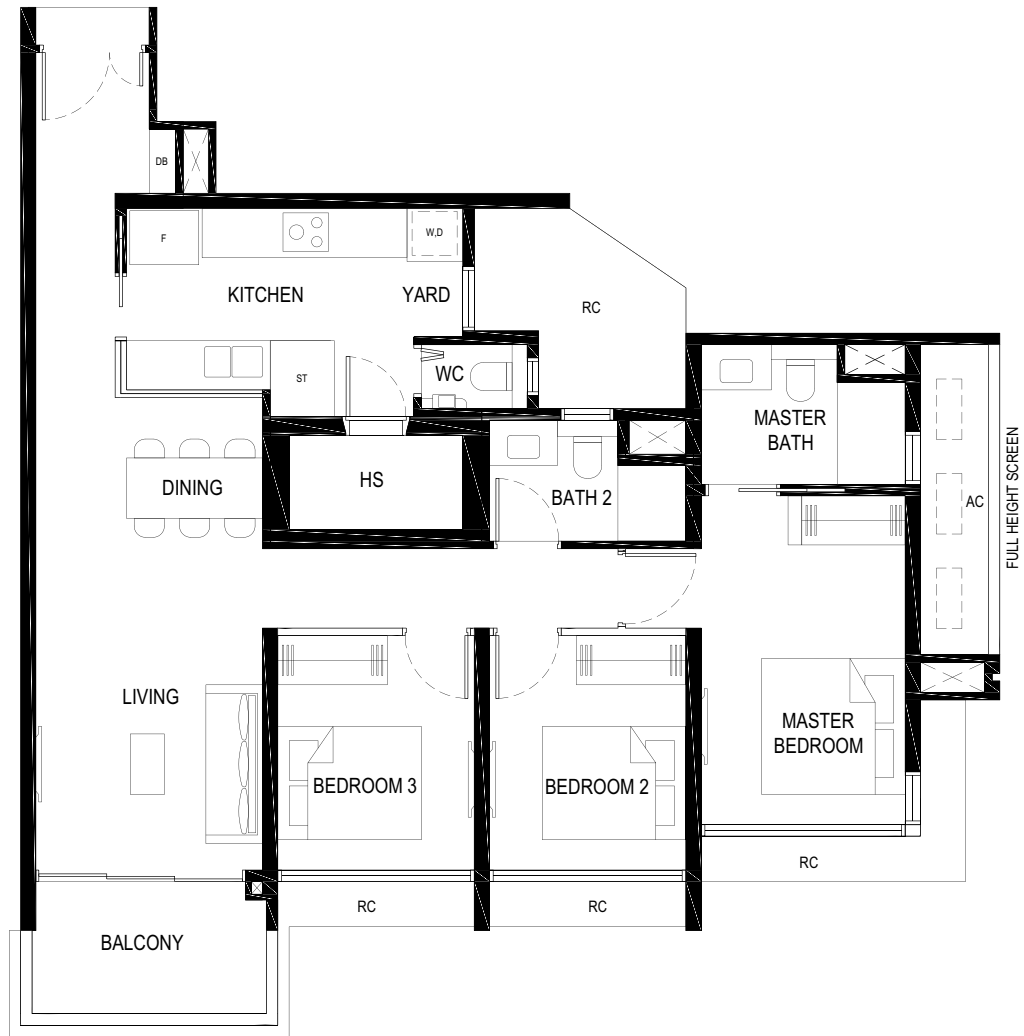
- AIRCON CONDENSER
- SERVICES VOID SPACE (NON-STRATA AREA)
- RAINWATER DOWNPIPE SHAFT SPACE (NON-STRATA AREA)
- WALL NOT ALLOWED TO BE HACKED OR ALTERED (INCLUDING BY WAY OF DRILLING)
- NON - STRUCTURAL WALL

THE BALCONY SHALL NOT BE ENCLOSED. ONLY APPROVED BALCONY SCREENS ARE TO BE USED.
FOR AN ILLUSTRATION OF THE APPROVED BALCONY SCREEN, PLEASE REFER TO PAGE 69 OF THIS BROCHURE.



3 BEDROOM

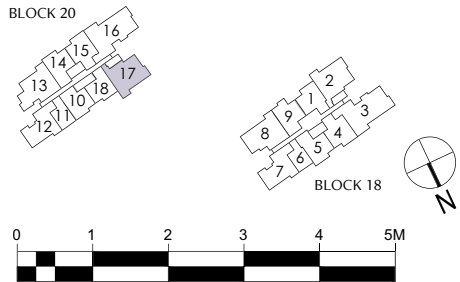
TYPE (3)b
100 sq m
#02-17 to #13-17
#15-17 to #27-17



- LEGEND:
- F - FRIDGE
 - DB - DISTRIBUTION BOARD
 - W - WASHER
 - D - DRYER
 - HS - HOUSEHOLD SHELTER
 - RC - REINFORCED CONCRETE LEDGE (NON-STRATA AREA)
 - AC - AIRCON LEDGE (NON-STRATA AREA)
 - ST - STORAGE
 - WC - WATER CLOSET

- AIRCON CONDENSER
- SERVICES VOID SPACE (NON-STRATA AREA)
- RAINWATER DOWNPIPE SHAFT SPACE (NON-STRATA AREA)
- WALL NOT ALLOWED TO BE HACKED OR ALTERED (INCLUDING BY WAY OF DRILLING)
- NON - STRUCTURAL WALL

THE BALCONY SHALL NOT BE ENCLOSED. ONLY APPROVED BALCONY SCREENS ARE TO BE USED.
FOR AN ILLUSTRATION OF THE APPROVED BALCONY SCREEN, PLEASE REFER TO PAGE 69 OF THIS BROCHURE.



3 BEDROOM

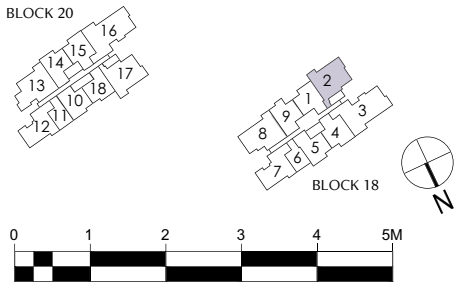
TYPE (3)c1
100 sq m
#01-02



- LEGEND:
- F - FRIDGE
 - DB - DISTRIBUTION BOARD
 - W - WASHER
 - D - DRYER
 - HS - HOUSEHOLD SHELTER
 - AC - AIRCON LEDGE (NON-STRATA AREA)
 - PES - PRIVATE ENCLOSED SPACE
 - ST - STORAGE
 - WC - WATER CLOSET

- AIRCON CONDENSER
- SERVICES VOID SPACE (NON-STRATA AREA)
- RAINWATER DOWNPIPE SHAFT SPACE (NON-STRATA AREA)
- WALL NOT ALLOWED TO BE HACKED OR ALTERED (INCLUDING BY WAY OF DRILLING)
- NON - STRUCTURAL WALL

THE BALCONY SHALL NOT BE ENCLOSED. ONLY APPROVED BALCONY SCREENS ARE TO BE USED.
FOR AN ILLUSTRATION OF THE APPROVED BALCONY SCREEN, PLEASE REFER TO PAGE 69 OF THIS BROCHURE.



3 BEDROOM

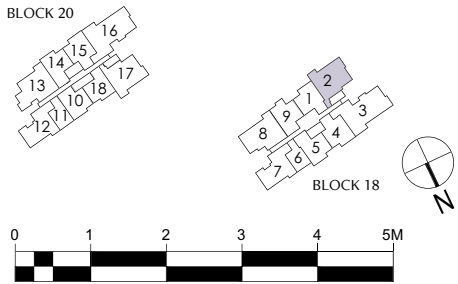
TYPE (3)c
100 sq m
#02-02 to #13-02
#15-02 to #28-02



- LEGEND:
- F - FRIDGE
 - DB - DISTRIBUTION BOARD
 - W - WASHER
 - D - DRYER
 - HS - HOUSEHOLD SHELTER
 - RC - REINFORCED CONCRETE LEDGE (NON-STRATA AREA)
 - AC - AIRCON LEDGE (NON-STRATA AREA)
 - ST - STORAGE
 - WC - WATER CLOSET

- AIRCON CONDENSER
- SERVICES VOID SPACE (NON-STRATA AREA)
- RAINWATER DOWNPIPE SHAFT SPACE (NON-STRATA AREA)
- WALL NOT ALLOWED TO BE HACKED OR ALTERED (INCLUDING BY WAY OF DRILLING)
- NON - STRUCTURAL WALL

THE BALCONY SHALL NOT BE ENCLOSED. ONLY APPROVED BALCONY SCREENS ARE TO BE USED.
FOR AN ILLUSTRATION OF THE APPROVED BALCONY SCREEN, PLEASE REFER TO PAGE 69 OF THIS BROCHURE.



4 BEDROOM

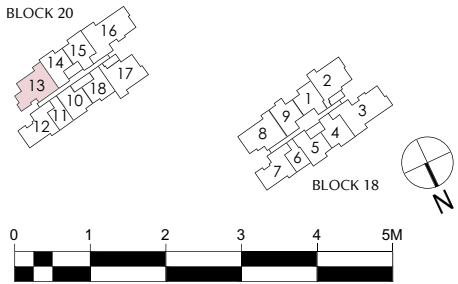
TYPE (4)a1
110 sq m
#01-13



- LEGEND:
- F - FRIDGE
 - DB - DISTRIBUTION BOARD
 - W - WASHER
 - D - DRYER
 - HS - HOUSEHOLD SHELTER
 - AC - AIRCON LEDGE (NON-STRATA AREA)
 - PES - PRIVATE ENCLOSED SPACE
 - ST - STORAGE
 - WC - WATER CLOSET

- AIRCON CONDENSER
- SERVICES VOID SPACE (NON-STRATA AREA)
- RAINWATER DOWNPIPE SHAFT SPACE (NON-STRATA AREA)
- WALL NOT ALLOWED TO BE HACKED OR ALTERED (INCLUDING BY WAY OF DRILLING)
- NON - STRUCTURAL WALL

THE BALCONY SHALL NOT BE ENCLOSED. ONLY APPROVED BALCONY SCREENS ARE TO BE USED.
FOR AN ILLUSTRATION OF THE APPROVED BALCONY SCREEN, PLEASE REFER TO PAGE 69 OF THIS BROCHURE.



4 BEDROOM

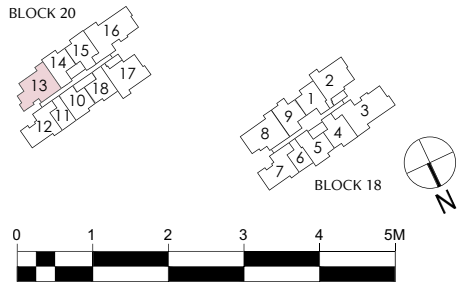
TYPE (4)a
110 sq m
#02-13 to #13-13
#15-13 to #27-13



- LEGEND:
- F - FRIDGE
 - DB - DISTRIBUTION BOARD
 - W - WASHER
 - D - DRYER
 - HS - HOUSEHOLD SHELTER
 - RC - REINFORCED CONCRETE LEDGE (NON-STRATA AREA)
 - AC - AIRCON LEDGE (NON-STRATA AREA)
 - ST - STORAGE
 - WC - WATER CLOSET

- AIRCON CONDENSER
- SERVICES VOID SPACE (NON-STRATA AREA)
- RAINWATER DOWNPIPE SHAFT SPACE (NON-STRATA AREA)
- WALL NOT ALLOWED TO BE HACKED OR ALTERED (INCLUDING BY WAY OF DRILLING)
- NON - STRUCTURAL WALL

THE BALCONY SHALL NOT BE ENCLOSED. ONLY APPROVED BALCONY SCREENS ARE TO BE USED.
FOR AN ILLUSTRATION OF THE APPROVED BALCONY SCREEN, PLEASE REFER TO PAGE 69 OF THIS BROCHURE.



4 BEDROOM

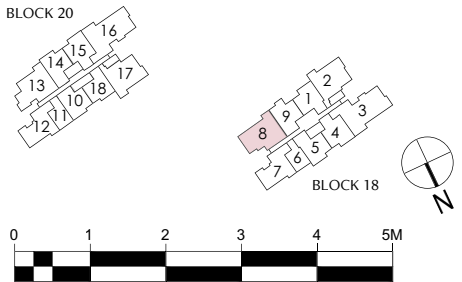
TYPE (4)b1
110 sq m
#01-08



- LEGEND:
- F - FRIDGE
 - DB - DISTRIBUTION BOARD
 - W - WASHER
 - D - DRYER
 - HS - HOUSEHOLD SHELTER
 - AC - AIRCON LEDGE (NON-STRATA AREA)
 - PES - PRIVATE ENCLOSED SPACE
 - ST - STORAGE
 - WC - WATER CLOSET

- AIRCON CONDENSER
- SERVICES VOID SPACE (NON-STRATA AREA)
- RAINWATER DOWNPIPE SHAFT SPACE (NON-STRATA AREA)
- WALL NOT ALLOWED TO BE HACKED OR ALTERED (INCLUDING BY WAY OF DRILLING)
- NON - STRUCTURAL WALL

THE BALCONY SHALL NOT BE ENCLOSED. ONLY APPROVED BALCONY SCREENS ARE TO BE USED.
FOR AN ILLUSTRATION OF THE APPROVED BALCONY SCREEN, PLEASE REFER TO PAGE 69 OF THIS BROCHURE.



4 BEDROOM

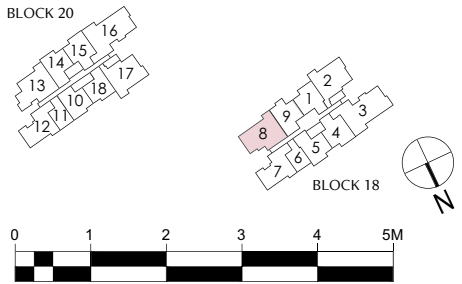
TYPE (4)b
110 sq m
#02-08 to #13-08
#15-08 to #28-08



- LEGEND:
- F - FRIDGE
 - DB - DISTRIBUTION BOARD
 - W - WASHER
 - D - DRYER
 - HS - HOUSEHOLD SHELTER
 - RC - REINFORCED CONCRETE LEDGE (NON-STRATA AREA)
 - AC - AIRCON LEDGE (NON-STRATA AREA)
 - ST - STORAGE
 - WC - WATER CLOSET

- AIRCON CONDENSER
- SERVICES VOID SPACE (NON-STRATA AREA)
- RAINWATER DOWNPIPE SHAFT SPACE (NON-STRATA AREA)
- WALL NOT ALLOWED TO BE HACKED OR ALTERED (INCLUDING BY WAY OF DRILLING)
- NON - STRUCTURAL WALL

THE BALCONY SHALL NOT BE ENCLOSED. ONLY APPROVED BALCONY SCREENS ARE TO BE USED.
FOR AN ILLUSTRATION OF THE APPROVED BALCONY SCREEN, PLEASE REFER TO PAGE 69 OF THIS BROCHURE.



4 BEDROOM

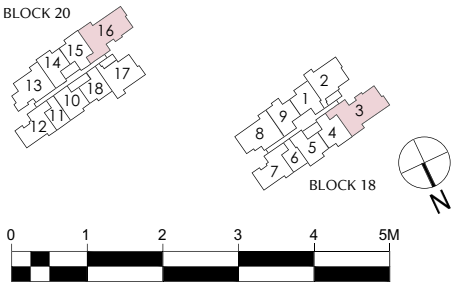
TYPE (4)c1
130 sq m
#01-03
#01-16*
*MIRROR UNIT



- LEGEND:
- F - FRIDGE
 - DB - DISTRIBUTION BOARD
 - W - WASHER
 - D - DRYER
 - HS - HOUSEHOLD SHELTER
 - AC - AIRCON LEDGE (NON-STRATA AREA)
 - PES - PRIVATE ENCLOSED SPACE
 - ST - STORAGE
 - WC - WATER CLOSET

- AIRCON CONDENSER
- SERVICES VOID SPACE (NON-STRATA AREA)
- RAINWATER DOWNPIPE SHAFT SPACE (NON-STRATA AREA)
- WALL NOT ALLOWED TO BE HACKED OR ALTERED (INCLUDING BY WAY OF DRILLING)
- NON - STRUCTURAL WALL

THE BALCONY SHALL NOT BE ENCLOSED. ONLY APPROVED BALCONY SCREENS ARE TO BE USED.
FOR AN ILLUSTRATION OF THE APPROVED BALCONY SCREEN, PLEASE REFER TO PAGE 69 OF THIS BROCHURE.



4 BEDROOM

TYPE (4)c
130 sq m

#02-03 to #13-03
#15-03 to #28-03
#02-16* to #13-16*
#15-16* to #27-16*

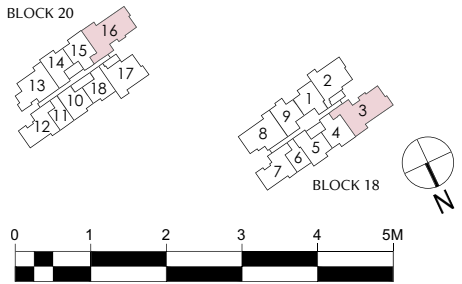
*MIRROR UNIT



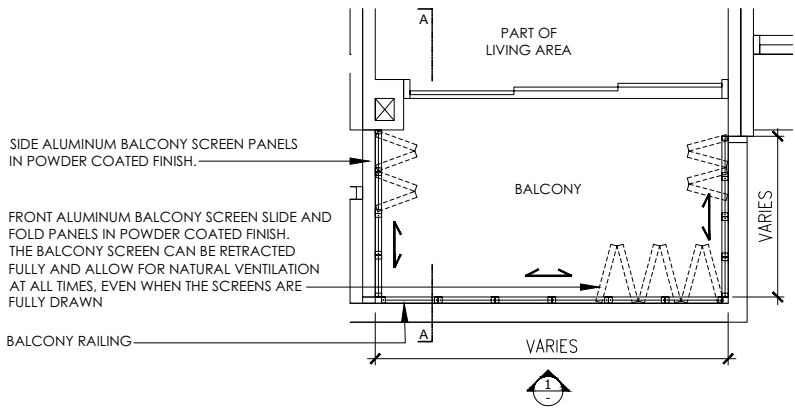
- LEGEND:
- F - FRIDGE
 - DB - DISTRIBUTION BOARD
 - W - WASHER
 - D - DRYER
 - HS - HOUSEHOLD SHELTER
 - RC - REINFORCED CONCRETE LEDGE (NON-STRATA AREA)
 - AC - AIRCON LEDGE (NON-STRATA AREA)
 - ST - STORAGE
 - WC - WATER CLOSET

- AIRCON CONDENSER
- SERVICES VOID SPACE (NON-STRATA AREA)
- RAINWATER DOWNPIPE SHAFT SPACE (NON-STRATA AREA)
- WALL NOT ALLOWED TO BE HACKED OR ALTERED (INCLUDING BY WAY OF DRILLING)
- NON - STRUCTURAL WALL

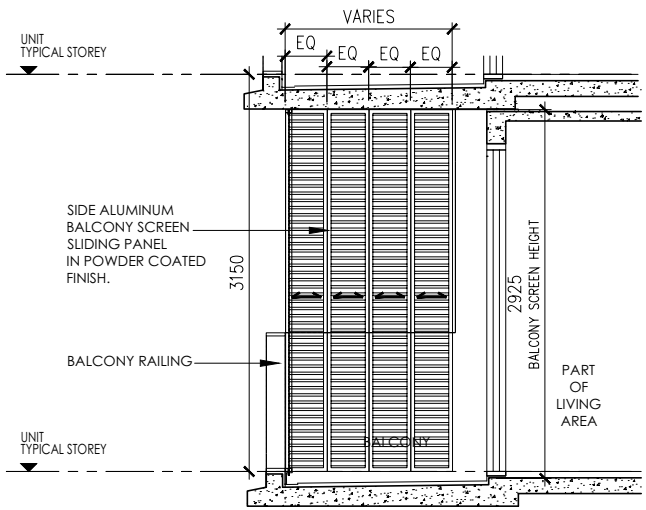
THE BALCONY SHALL NOT BE ENCLOSED. ONLY APPROVED BALCONY SCREENS ARE TO BE USED.
FOR AN ILLUSTRATION OF THE APPROVED BALCONY SCREEN, PLEASE REFER TO PAGE 69 OF THIS BROCHURE.



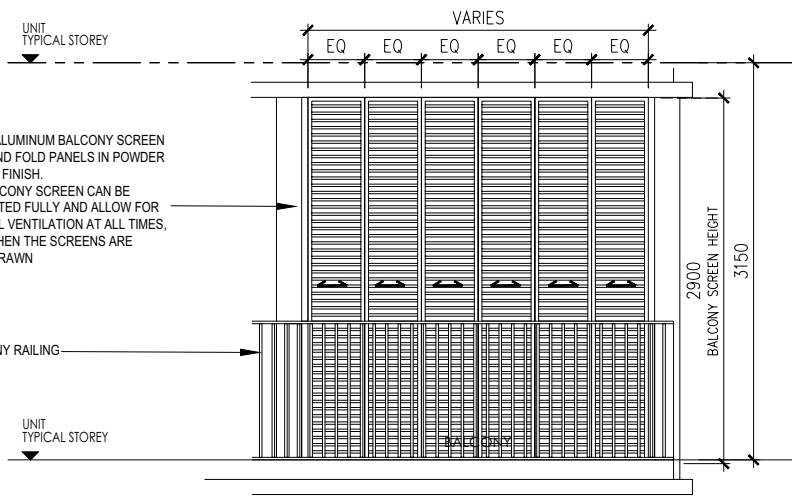
APPROVED SCREEN FOR BALCONY AND PRIVATE ENCLOSED SPACE (PES)



BALCONY / PES SCREEN - PLAN



BALCONY / PES SCREEN - SECTION A-A (Internal View)



BALCONY / PES SCREEN - FRONT ELEVATION (External View)

- BALCONY / PES SCREEN NOTICE**
1. THE BALCONY / PES SHALL NOT BE ENCLOSED UNLESS WITH THE APPROVED BALCONY / PES SCREEN
 2. THE BALCONY SCREEN WILL NOT BE PROVIDED IN THE DEPICTED UNITS. THE PURCHASERS WILL HAVE TO BEAR THE COSTS OF INSTALLING THE BALCONY SCREEN IF THEY WISH TO, AFTER TAKING OVER THEIR RESPECTIVE UNITS; AND
 3. THE PROPOSED BALCONY / PES SCREEN SHALL BE POROUS ENOUGH TO ALLOW FOR NATURAL VENTILATION WITH THE BALCONY / PES AT ALL TIME EVEN WHEN THE SCREEN ARE FULLY DRAWN CLOSED. THE PROPOSED BALCONY / PES SCREEN SHALL ALSO BE CAPABLE OF BEING DRAWN OPEN OR RETRACTED FULLY
 4. ON-SITE VERIFICATION IS NECESSARY TO OBTAIN ACTUAL MEASUREMENT PRIOR TO FABRICATION AND INSTALLATION OF THE APPROVED SCREEN FOR BALCONY & PES.

EQ - EQUIDISTANT

